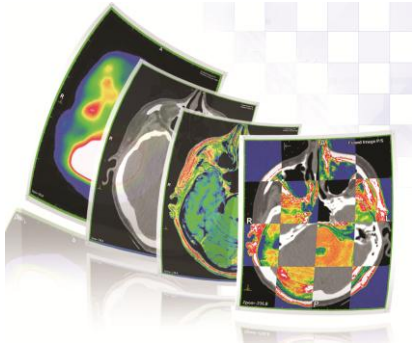


ImSimQA

Image Fusion and Registration QA Software



Testimonial



“ImSimQA has been in use at Northampton General Hospital for three years now. It has been an incredibly useful tool with many applications.

We originally procured it because we had acquired new Virtual Simulation software, and needed a way of commissioning and comparing the two image fusion packages we now had available. As with most departments, there is a distinct lack of time available on MR / PET scanner; and ImSimQA

seemed an inspired idea! We were able to assess the advantages and limitations of each system in a controlled and methodical way; for each algorithm provided by the two systems. Following software upgrades we were able to easily re-test the planning systems.

Additional uses have been in training staff in the image fusion packages; and setting new scanning protocols in the diagnostic department to improve the chances of a successful fusion of images.

We have also been able to use it for other departmental development. For example, the advancement of breast planning, by showing the effect on a treatment plan of putting patients on lower wedge angles on breast boards.

ImSimQA is such an exceptionally valuable tool. We could not have implemented image fusion at NGH without it; and there have also been unforeseen advantages as shown above. We look forward to using it to commission respiratory gating, CT-PET fusion and other new developments in the future – all of which will be a lot less time consuming via ImSimQA.”

Nicky Whilde
Principal Radiotherapy Physicist
Northampton General Hospital, England

Modus Medical Devices has partnered with UK-based ImSimQA developer, Oncology Systems Limited (OSL), to deliver their innovative virtual phantom software in North America. ImSimQA is complementary to the existing line of high quality advanced radiotherapy QA tools from Modus because it significantly expands the range of QA scenarios without having to buy a new phantom for every new configuration tested. To find out more, please contact Modus.

ACCURACY IS CRITICAL